

SEMINAR

“MEMBANGUN MODA TRANSPORTASI JALAN
UNTUK SISTEM TRANSPORTASI MULTIMODA DAN LOGISTIK
YANG EFEKTIF DAN EFISIEN
DALAM MENGHADAPI MASYARAKAT EKONOMI ASEAN (MEA) 2015”

THE GOLF - PANTAI INDAH KAPUK - JAKARTA
RABU-KAMIS, 25-26 FEBRUARI 2015

SPONSOR:



TATA MOTORS



Exclusive Dealer Indonesia
PT INTRACO PENTA WAHANA



CIKARANG DRY PORT



ralali.com
INDUSTRIAL ONLINE STORE



ISUZU
Rajanya Diesel

GT RADIAL
Experience the Performance



RRS
RAJA RAFA SAWOJA
RAJA RAFA SAWOJA
RAJA RAFA SAWOJA



Mobil Delvac



PT. SETIAKAWAN PAHALA MOTOR
For Your Satisfaction



MITRA APTRINDO:



MEDIA PARTNER:

Bisnis Indonesia

Bisnis.com

pasfm
RADIO BISNIS JAKARTA



PT Mustika Alam Lestari
Striving to provide efficient and cost effective service

MAJU BERSAMA KEBANGGAAN BANGSA



VALUE FOR THE FLEET

Maximizing Tire Life







SUPPLYCHAIN
Indonesia

TRUCKMAGZ

Asep Faisal, Dwi Triono, Jacky Ishak, Jeffrey Alman, Johanes Maria, Arief Bintoro

Maximizing Tire life

Learning Objectives

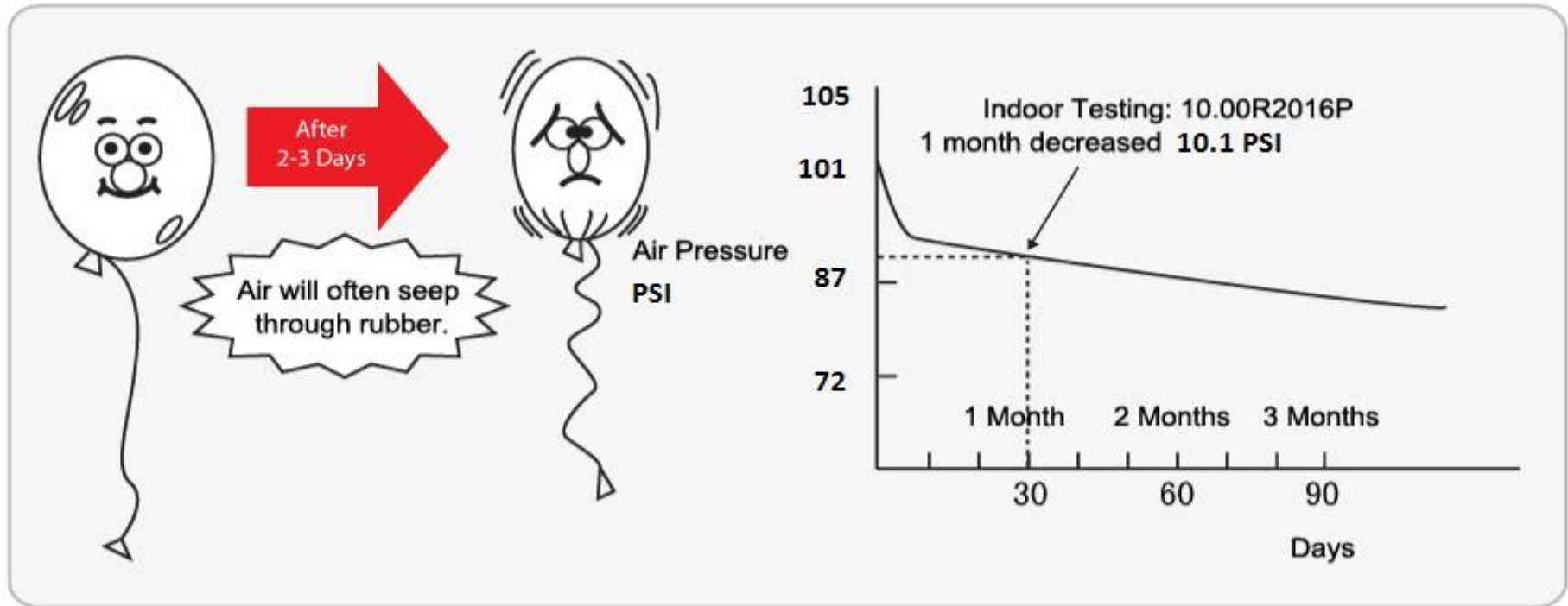
1. Tire Pressure Management 
2. Tire Rotation Management 
3. Factors that affect Tire Wear 
4. Retread Tire 

Source : <http://www.gtradialfleet.com/Tire-Care/Maximizing-Tire-Life#ql-collapse-a>

Maximizing Tire life

1. Tire Pressure Management

Why Should We Perform Regular Tire Pressure Checks?



Tire Pressure will naturally decrease over time.
New tire will decrease 10,1 PSI within a month

**Importance of Regular
Tire Pressure Inspection**

Source : <http://www.gtradialfleet.com/Tire-Care/Maximizing-Tire-Life#ql-collapse-a>

Maximizing Tire life

1. Tire Pressure management

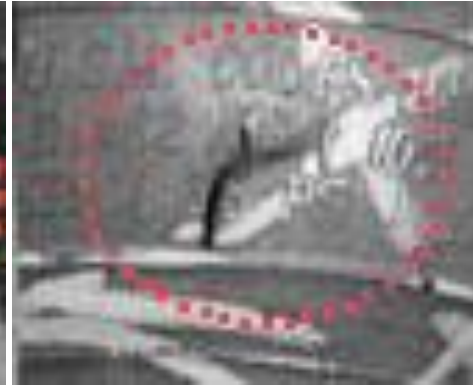
Dangers of Low Tire Pressure



Abnormal Shoulder Wear
On Both Sides (Reducing
mileages)



Deformed Sidewalls (Steel
Wire Detaches From
Rubber) causing too much
flexing and building heat



Sidewalls Easily Broken
causing too much flexing
and building heat



Increased Fuel
Consumption due to
higher rolling resistances

Source : <http://www.gtradialfleet.com/Tire-Care/Maximizing-Tire-Life#ql-collapse-a>

Maximizing Tire life

1. Tire Pressure management

Dangers of High Tire Pressure

1. Tire Damage

- Decreased buffering capacity and shock resistance leads to more broken steel wires or tire blowouts
- Smaller contact area between tire and the ground leads to faster wear, especially in the center, resulting shorter tire life
- Increased skidding
- Causing higher chance to burst

Source : <http://www.gtradialfleet.com/Tire-Care/Maximizing-Tire-Life#ql-collapse-a>

Maximizing Tire life

1. Tire Pressure management

Dangers of High Tire Pressure

2. Rim Damage

- High tire pressure causes greater vibration which leads to rim damage



3. Vehicle Component Damage

- High tire pressure increases vibrations and damages vehicle components, while proper tire pressure has better buffering capacity



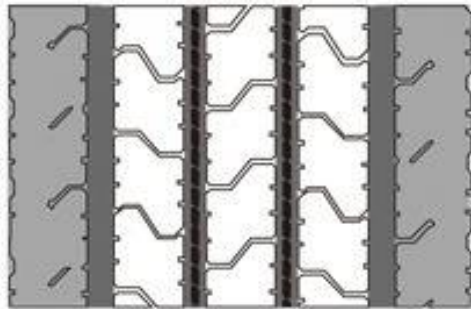
Source : <http://www.gtradialfleet.com/Tire-Care/Maximizing-Tire-Life#ql-collapse-a>

Maximizing Tire life

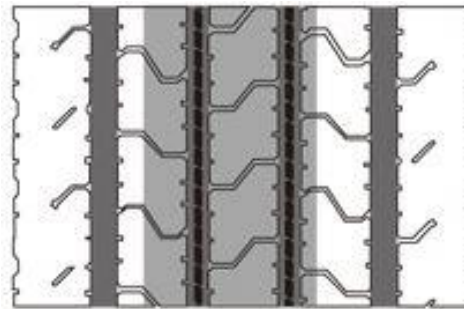
2. Rotation management

Purpose of Tire Rotation


1. Shoulder and bead failure becomes a concern when transporting heavy cargo.
Proper tire rotation can extend tire life.
2. Partial Wear at a Fixed Position



Inner & Outer Shoulder Wear



Center Wear

 Areas where irregular wear occur

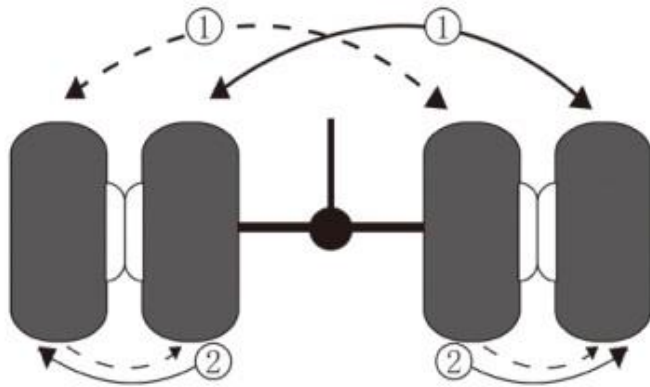
Source : <http://www.gtradialfleet.com/Tire-Care/Maximizing-Tire-Life#ql-collapse-a>

Maximizing Tire life

2. Rotation management

Tire Rotation Method

1. First Rotation: perform 2-3 rotations until the tires are completely worn
2. Second Rotation: if possible, rotate tires between different axles for better results when using dual tires, the inner tires usually bear more weight and absorb more heat from the brake drums



Key Points of Tire Rotation

1. Change the rolling direction
2. Rotate between front wheels, trailer wheels, and drive axles
3. Tire rotation frequency should be higher during initial stage of wear if irregular wear occurs.

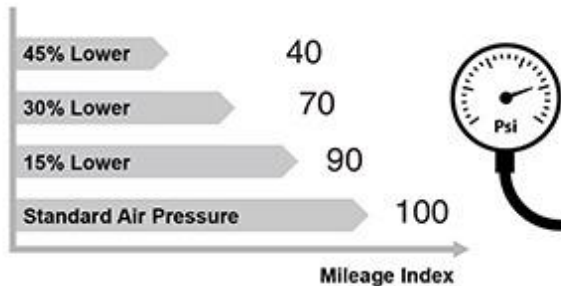
Source : <http://www.gtradialfleet.com/Tire-Care/Maximizing-Tire-Life#ql-collapse-b>

Maximizing Tire life

3. Factors that affect Tire Wear

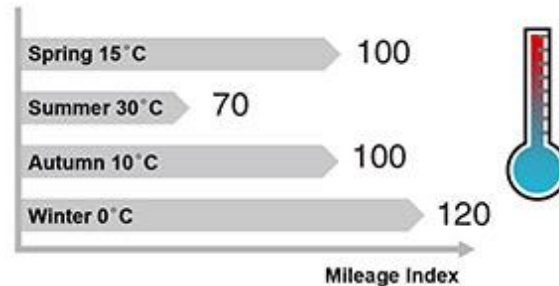
1.

Tire Pressure



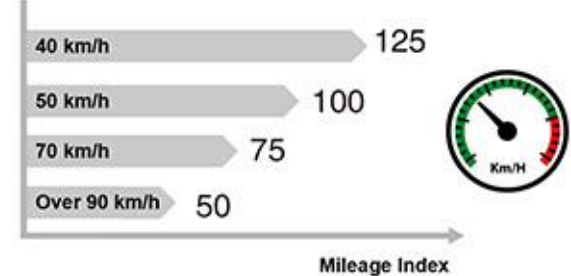
2.

Temperature



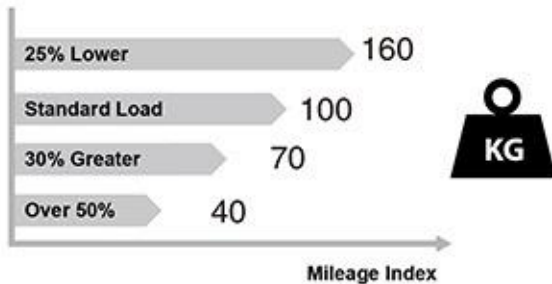
3.

Average Speed



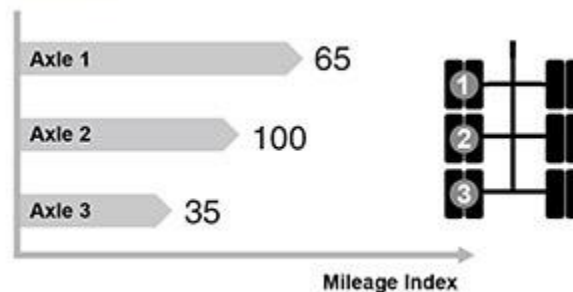
4.

Vehicle Load



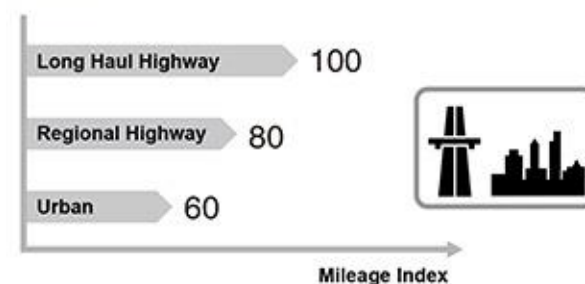
5.

Trailer Wheel Position



6.

Road Conditions



Source : <http://www.gtradialfleet.com/Tire-Care/Maximizing-Tire-Life#ql-collapse-b>

Maximizing Tire life

4. Retread

Retread tire mainly refers to retreading the tire crown

For the majority of drivers, retread tires save money!

How much money can you actually save?

Assuming Tire Casing is well maintained, let's do some calculations.

Price:

-Price is what you pay for your products

Cost:

-Cost is what you get from your money.



For Example: 12R22.5 16PR GT879

New Tire Price Rp.3jt = 80,000km

Retreaded Tire Cost Rp.1jt

Total cost paid Rp.4jt for est. 140,000km

Meaning your total cost per tire per 1,000km is Rp 28.571

You save est. 24% compare to new tire cost (new tire-only 1 life)

*Price index are only provided as examples

For an accurate calculation, please use actual numbers.

Source : <http://www.gtradialfleet.com/Tire-Care/Maximizing-Tire-Life#ql-collapse-b>



Thank you & see you again soon!

PT. Gajah Tunggal Tbk
Wisma Hayam Wuruk 10th Floor
Jln. Hayam Wuruk No.8, Jakarta Pusat, Indonesia

